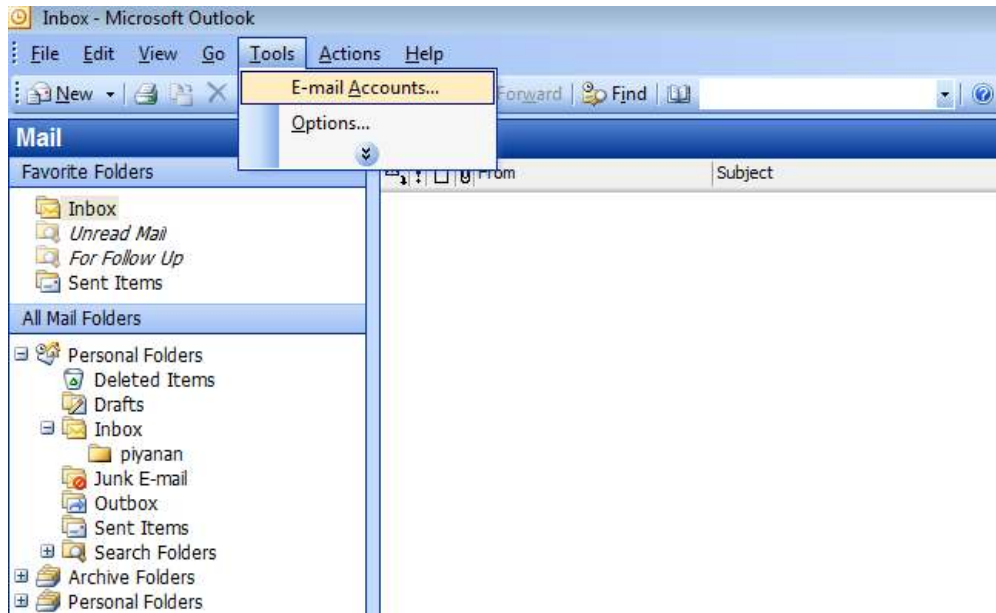


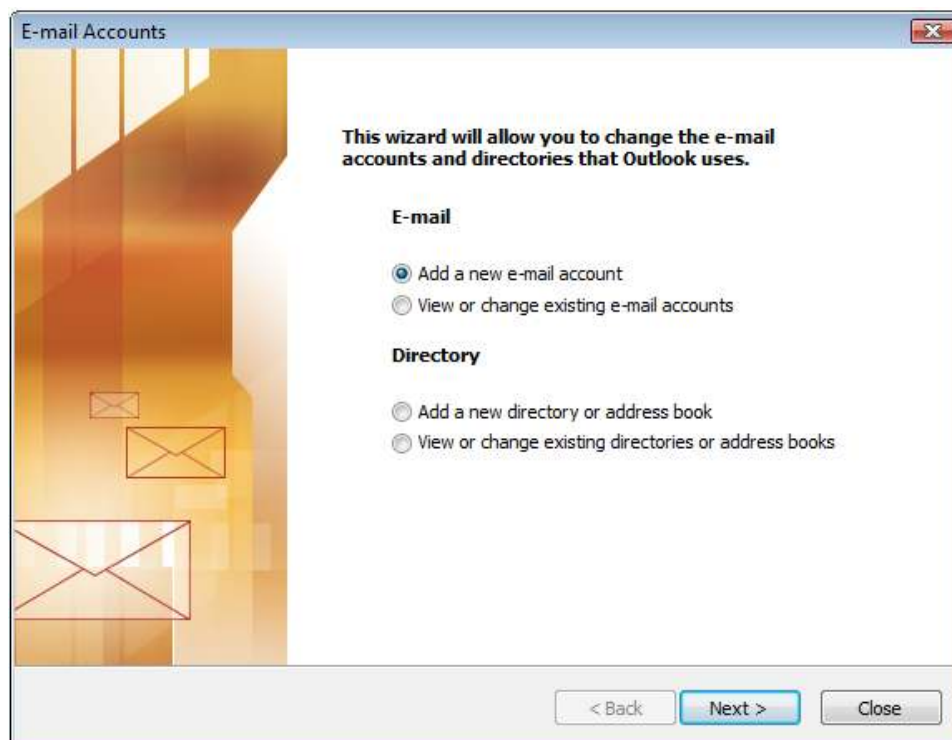
Server : Verio (Level1 / Level2 / Level3/ Vpack)

To Set Up Your E-mail Account in Microsoft outlook 2003

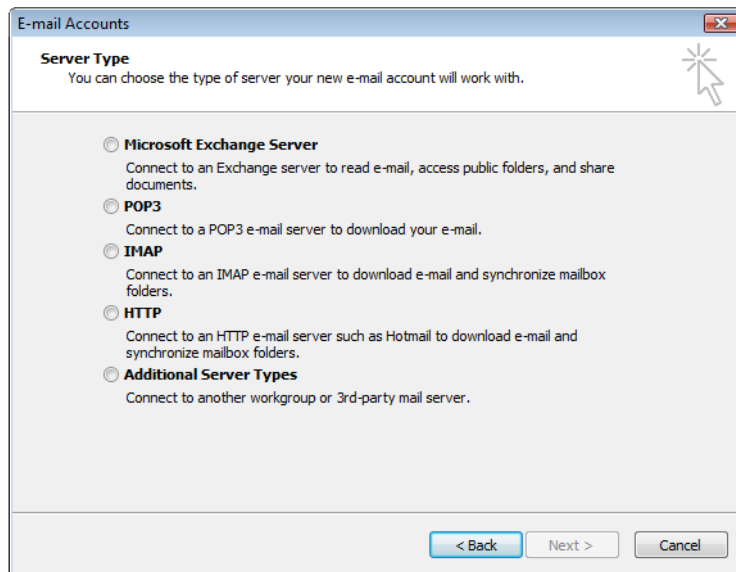
1. In Microsoft outlook, select Tools > E-mail Account.



2. In E-mail Accounts, Select Add new e-mail account >> Next



3. Select POP3 >> Next



4. enter your information as follows:

Your Name : Enter your name

: webswevice

E-mail Address : Enter your e-mail address

: test@expressdata.co.th

Incoming mail (POP 3) :

Enter your domain name (Ex. expressdata.co.th)

: expressdata.co.th

Outgoing mail (SMTP):

Enter your domain name (Ex. expressdata.co.th)

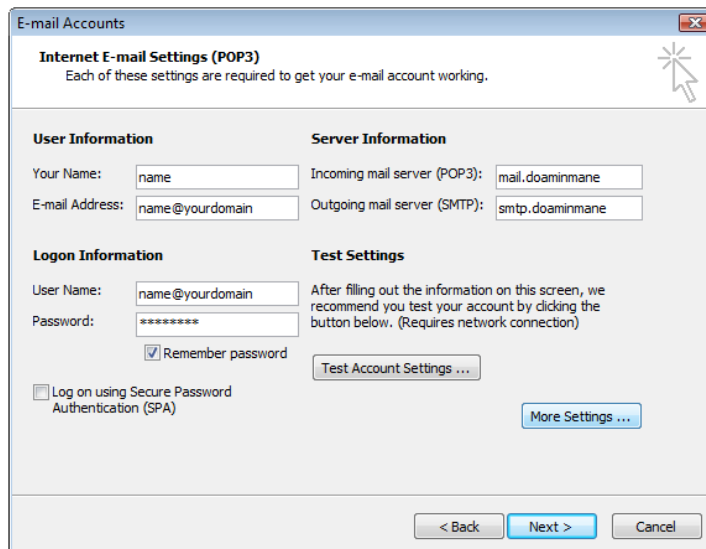
: expressdata.co.th

User Name : Enter your Username

: test

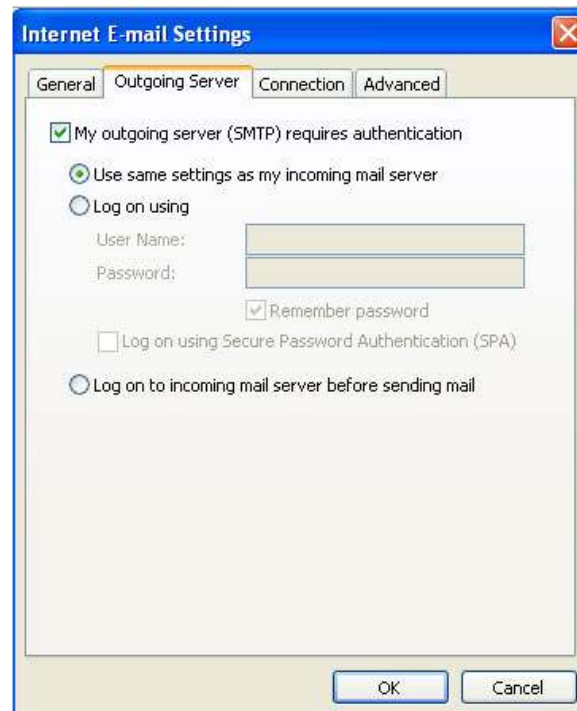
Password : Enter your password

: *****

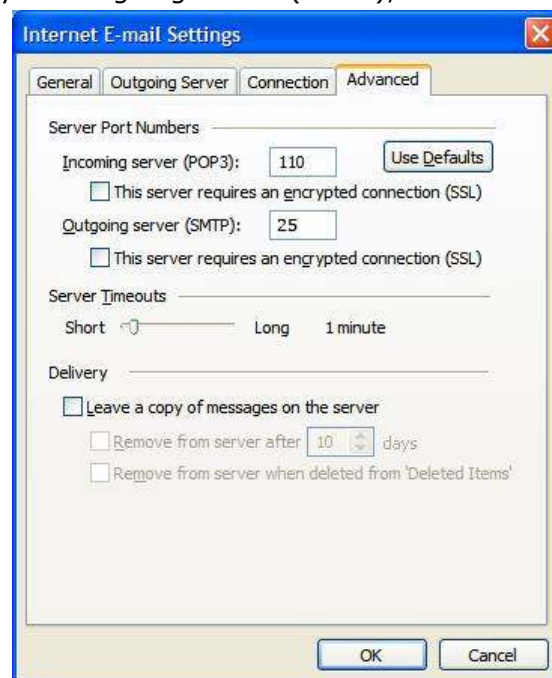


NOTE: "expressdata.co.th" is an SMTP relay server. In order to use this server to send e-mails, you must first activate SMTP relay on your e-mail account. Log on to your Manage Email Accounts page to set up SMTP relay. If you do not have SMTP relay set up and your Internet Service Provider (ISP) allows it, you can use the outgoing mail server for your Internet Service Provider. Contact your Internet Service Provider to get this setting.

5. Click More Setting >> select tab Outgoing Server
6. On tab Outgoing Server
Select : My outgoing server (SMTP) requires authentication
And Use same setting as my incoming mail server

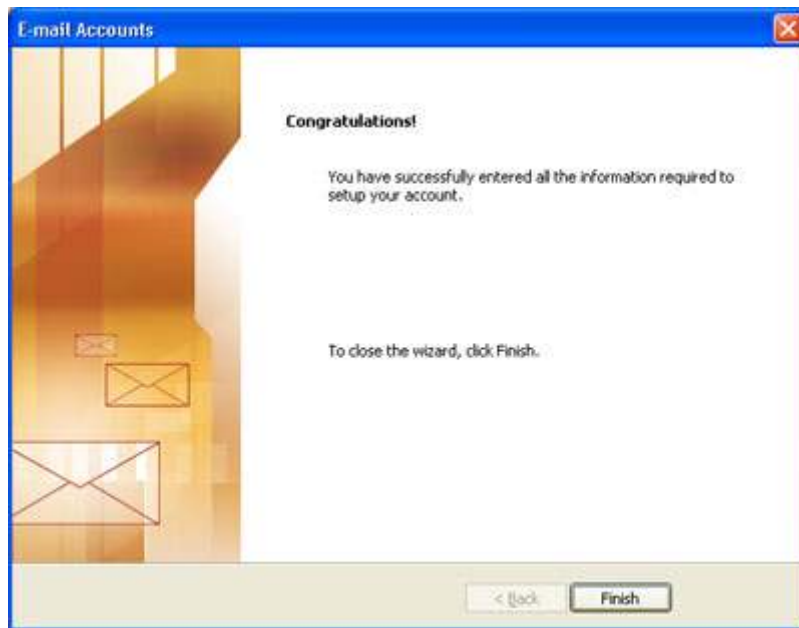


7. Go to the advanced tab. Verify that you have 110 for your incoming server (POP3) and 25 for your outgoing server (SMTP), and then click OK



NOTE:

6. If you have trouble sending email you can also try 25 or 587 for your outgoing server (SMTP) port.
7. If you have received E-mail more than 1 computer, you must check the box that say "Leave a copy of message on server" and check Remove from server after days for protect mailbox over quota.



8. OK >> Next >> Finish